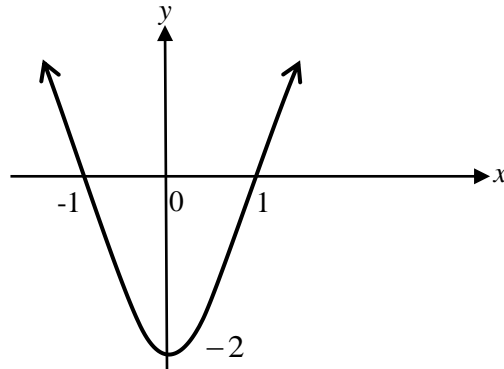


2021 Worksheet 5

Year 11 Applied Mathematics

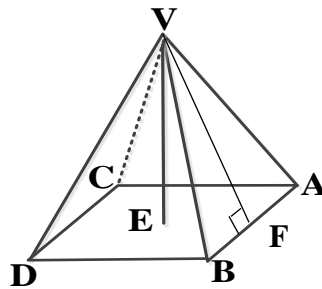
Write the answers in your Exercise Book.

1. Consider a relation given by the graph below.



- (a) What are the coordinates of the **x-intercepts**? (1 mark)
- (b) What are the coordinates of the **y-intercept**? (½ mark)
- (c) State the **domain**. (1 mark)
- (d) State the **range**. (1 mark)
- (e) Is this relation a **function**? Give a reason for your answer. (1 mark)

2. A **square pyramid** is shown below.



The length of **DB** = 10 cm , **AB** = 10 cm , the perpendicular height **VE** = 12 cm
and **VF** = 13 cm

- (a) Calculate the **volume** of this pyramid in cm^3 . (2 marks)
- (b) What is the total **surface area** of the pyramid? (2 marks)